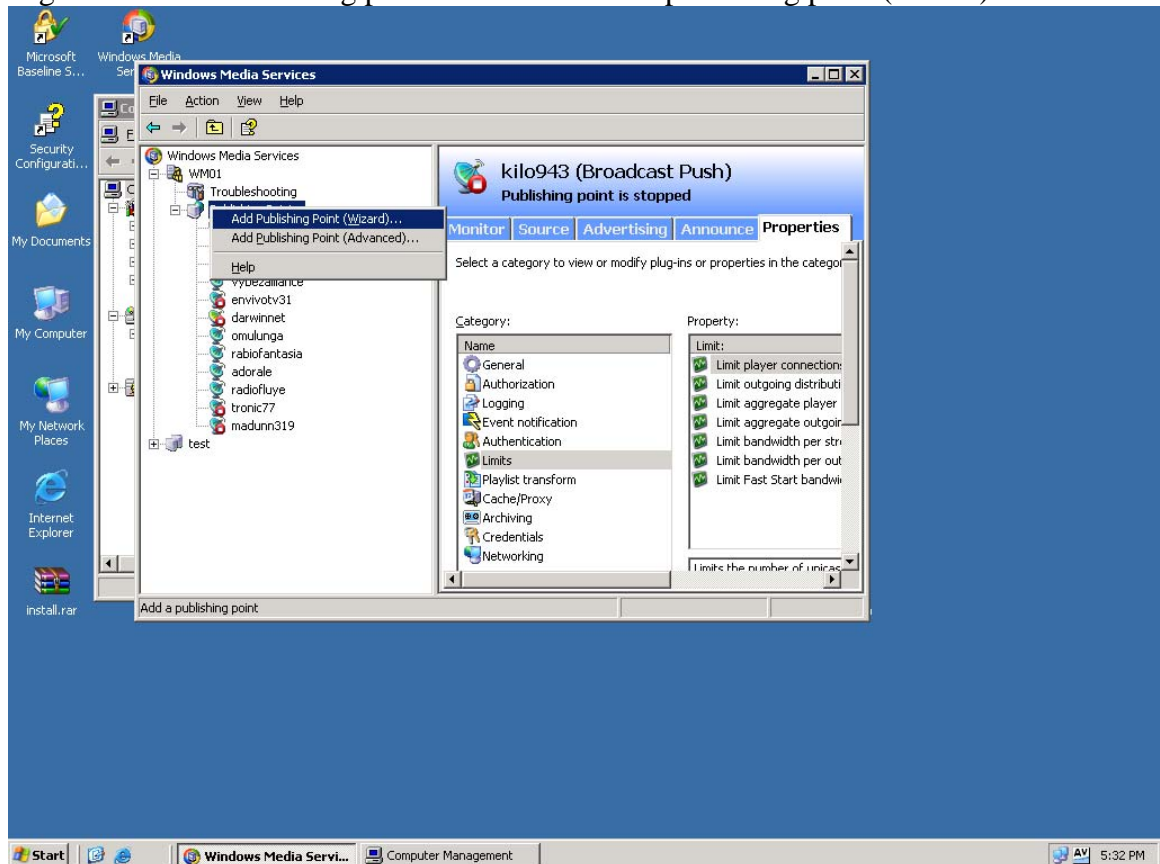


# How Do I: Create a Windows Mount Point on a VPS server

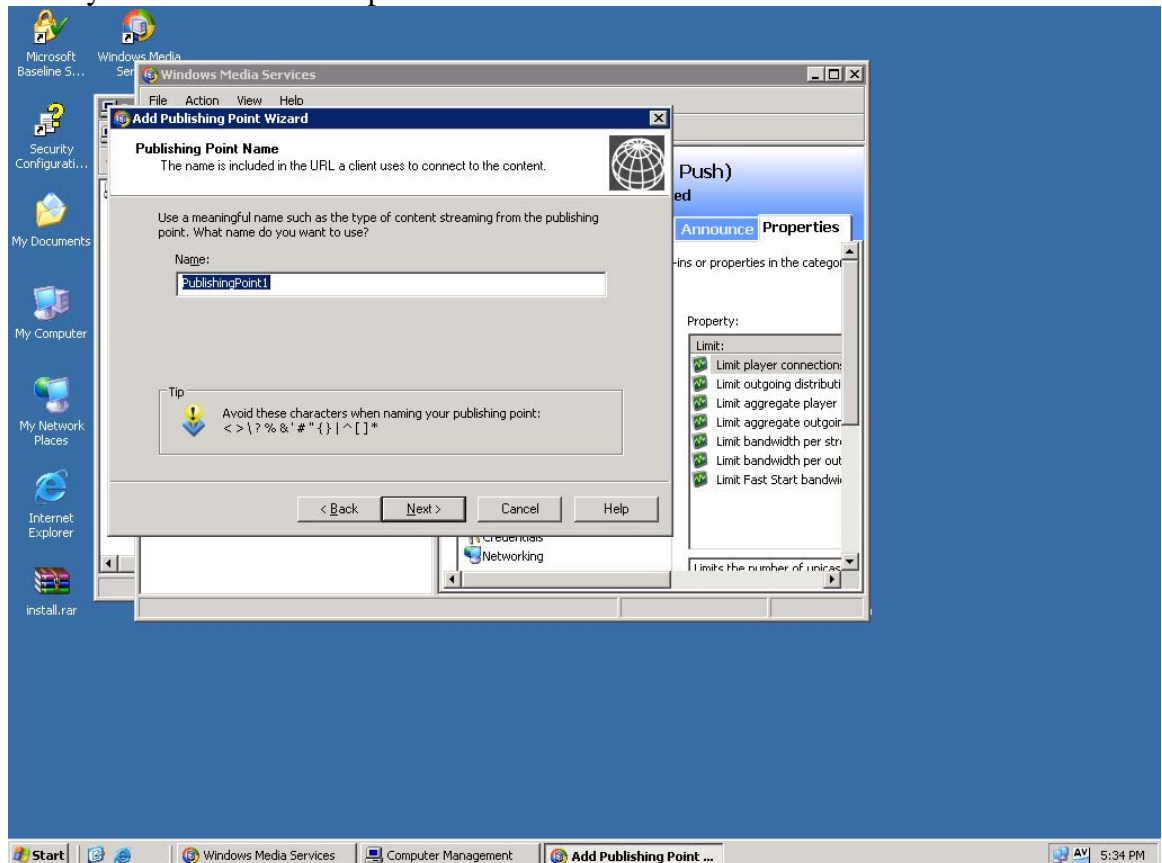
Knowledge Article

Jon Eaton

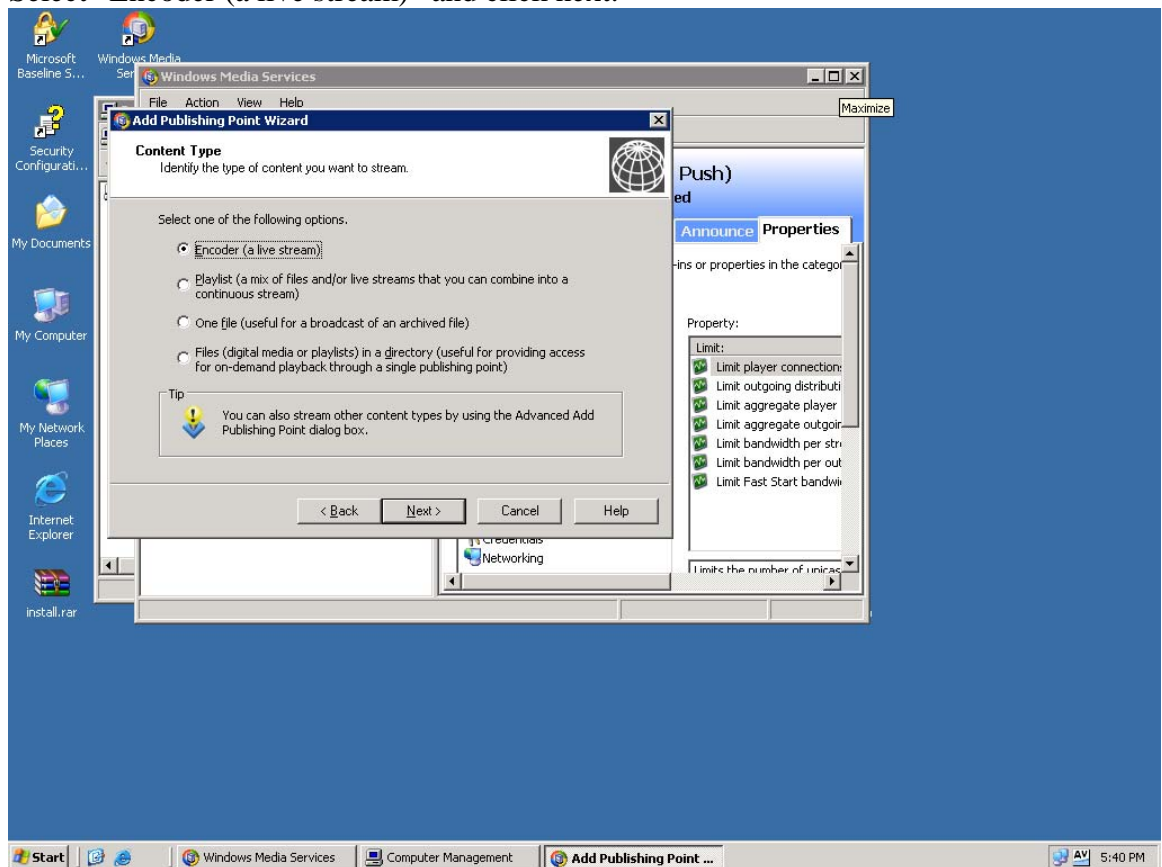
1. Open remote desktop and connect to your server using the IP that we sent you.
2. Right click on "My Computer" and select "manage" from the menu.
3. In the "Computer Management" window select and expand the "Local users and Groups".
4. Right click on "Users" and then select "new user" from the menu
  - a. Enter your customer mount point name (username)
  - b. Fill out the full name and description for the user
  - c. Uncheck "User must change password and next login"
  - d. Check "Password never expires"
  - e. Enter the Customer password in the "Password" and then confirm
  - f. Select "Create"
5. Open "Windows Media Services" from the Icon on the desktop.
6. Right Click on "Publishing point" and select "Add publishing point (wizard)"



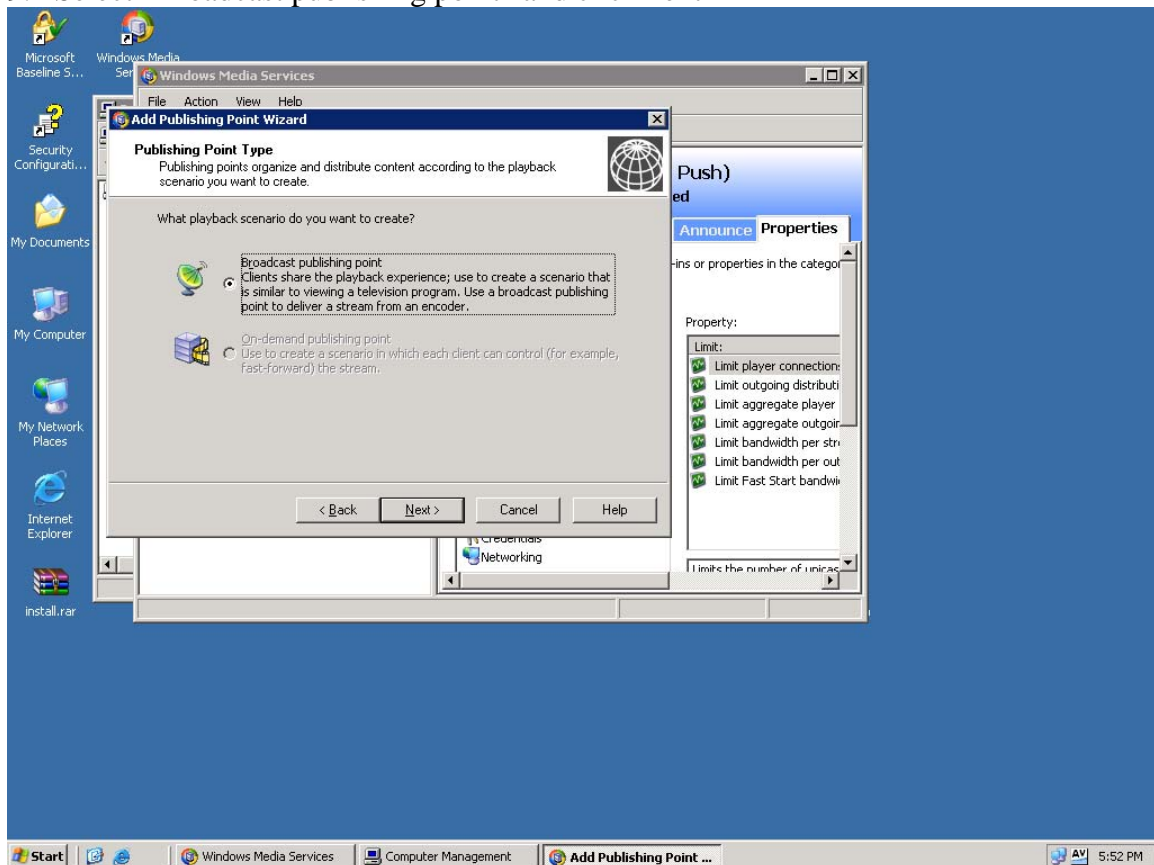
### 7. Enter your customer mount point name



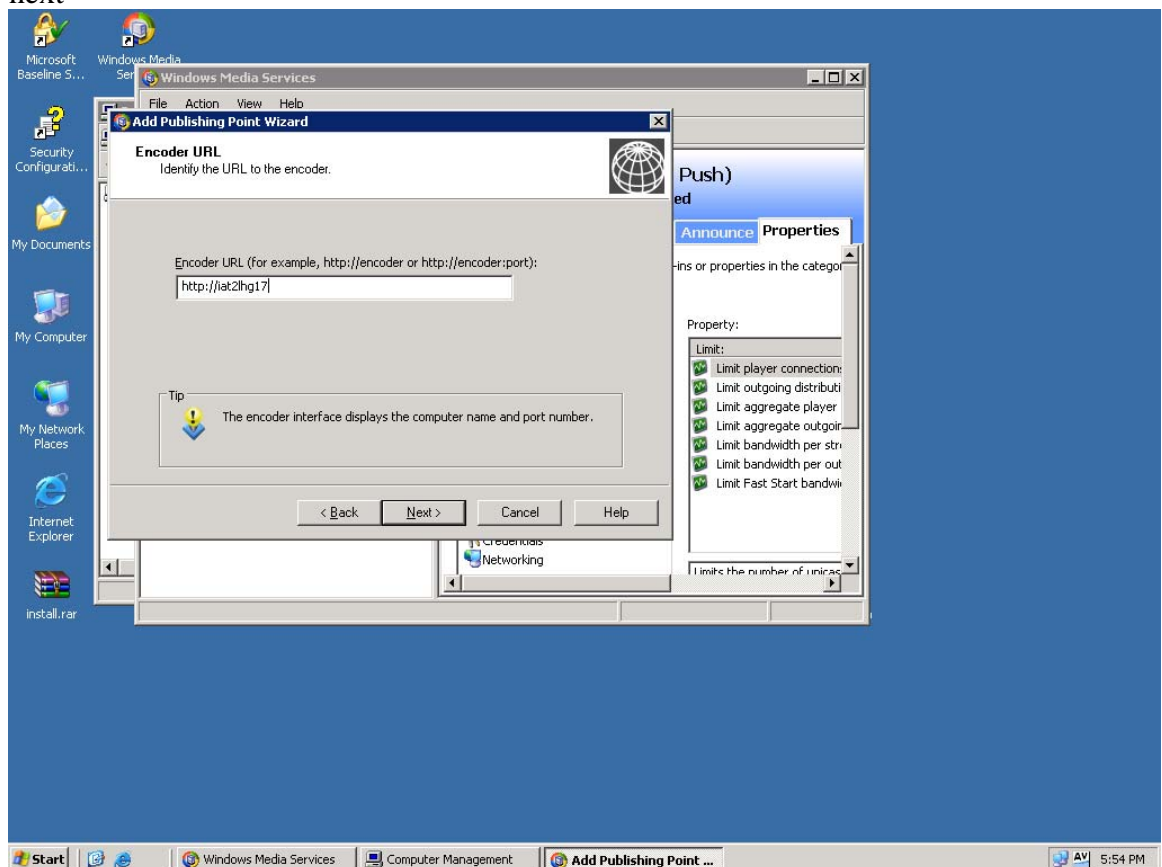
8. Select “Encoder (a live stream)” and click next.



### 9. Select “Broadcast publishing point” and click next



10. Enter the Customer Pull URL if this is being configured for Pull, if it is to be configured for Push enter the mount point name behind the http:// and click next

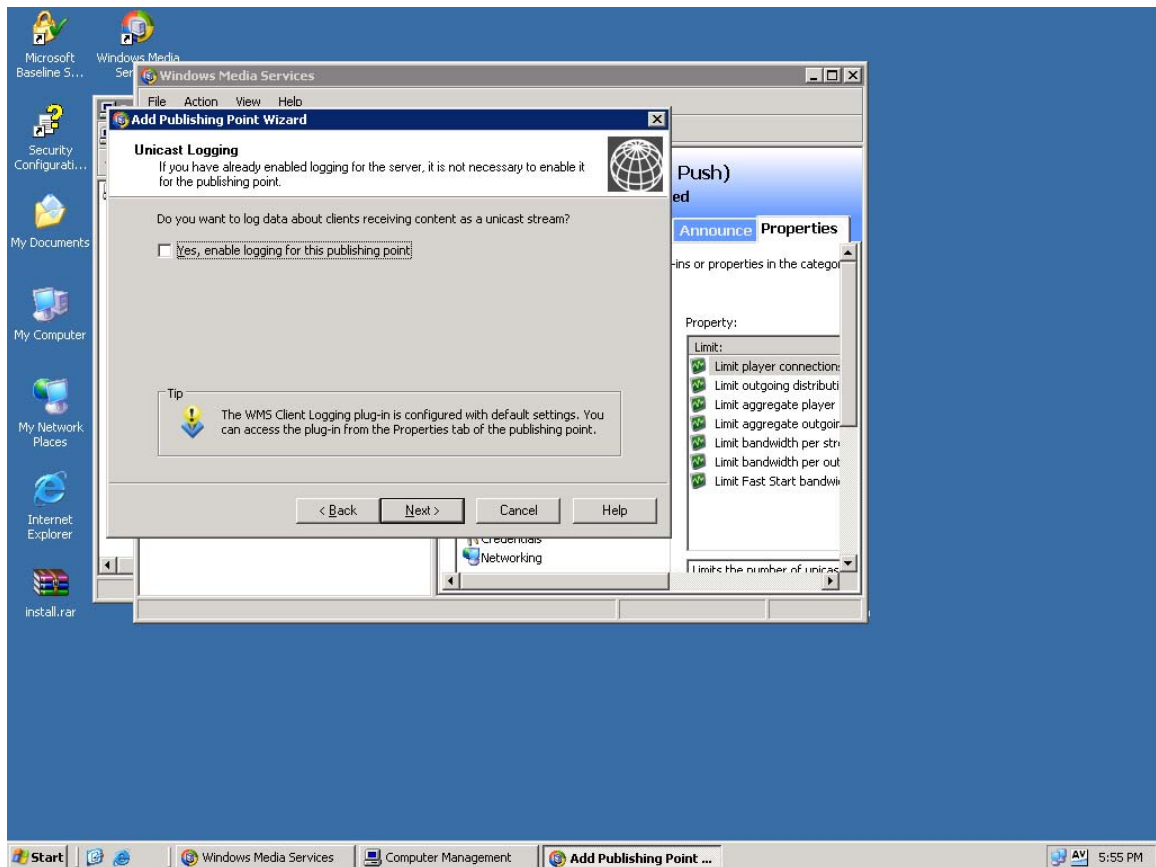


11. Select Yes to enable logging if you need the logs otherwise leave unchecked and click next

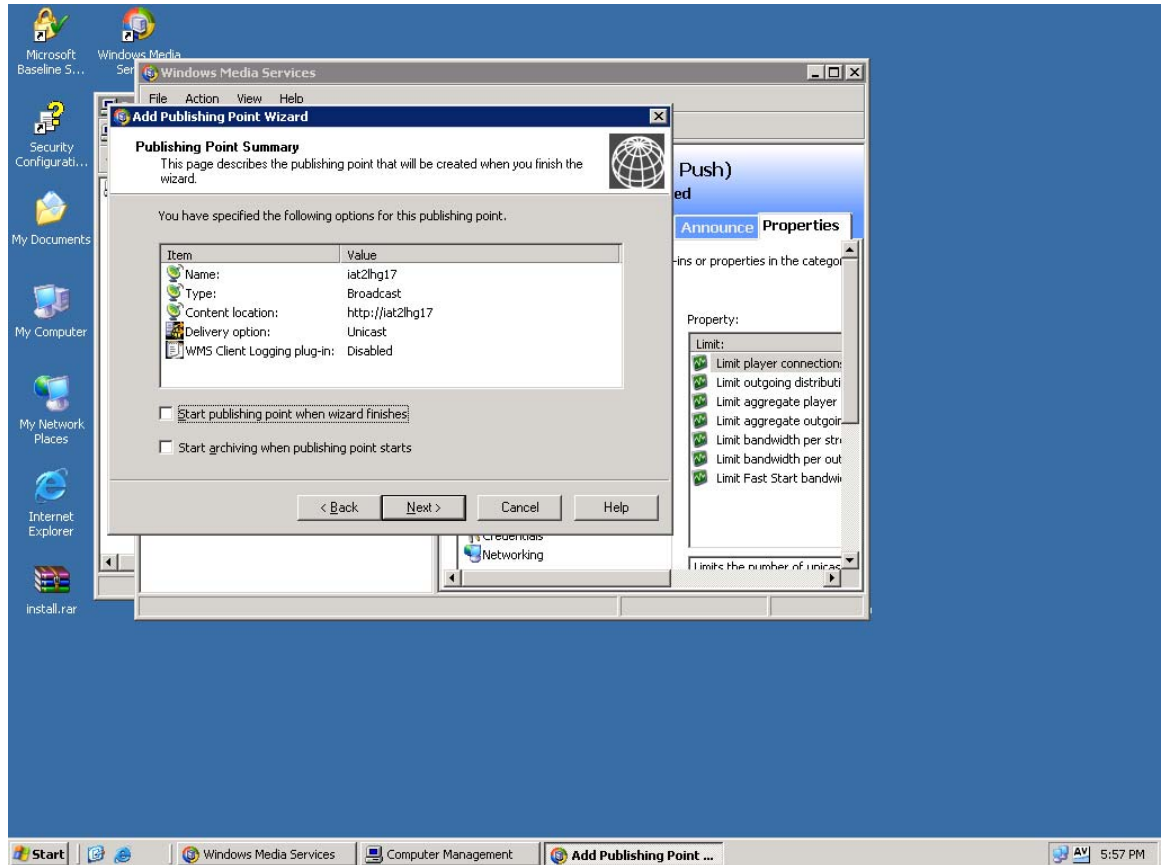
# How Do I: Create a Windows Mount Point on a VPS server

Knowledge Article

Jon Eaton

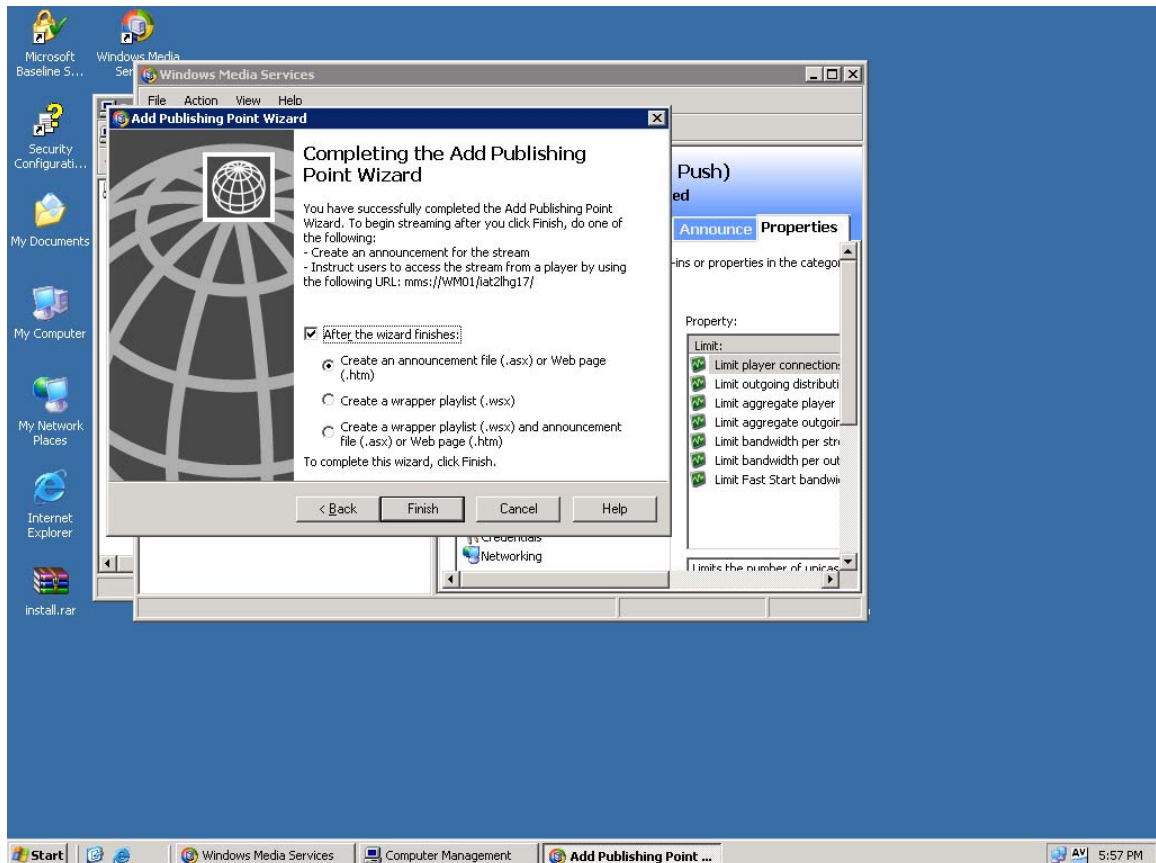


### 12. Click next

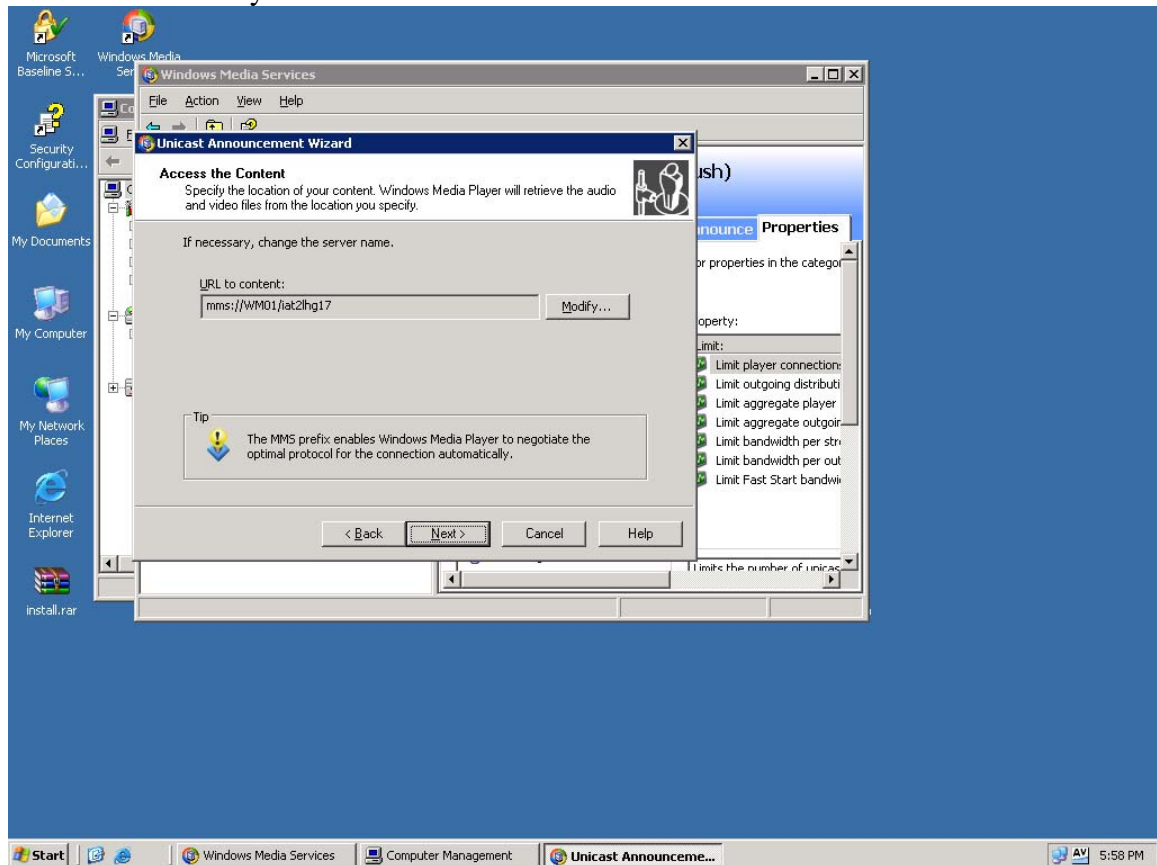




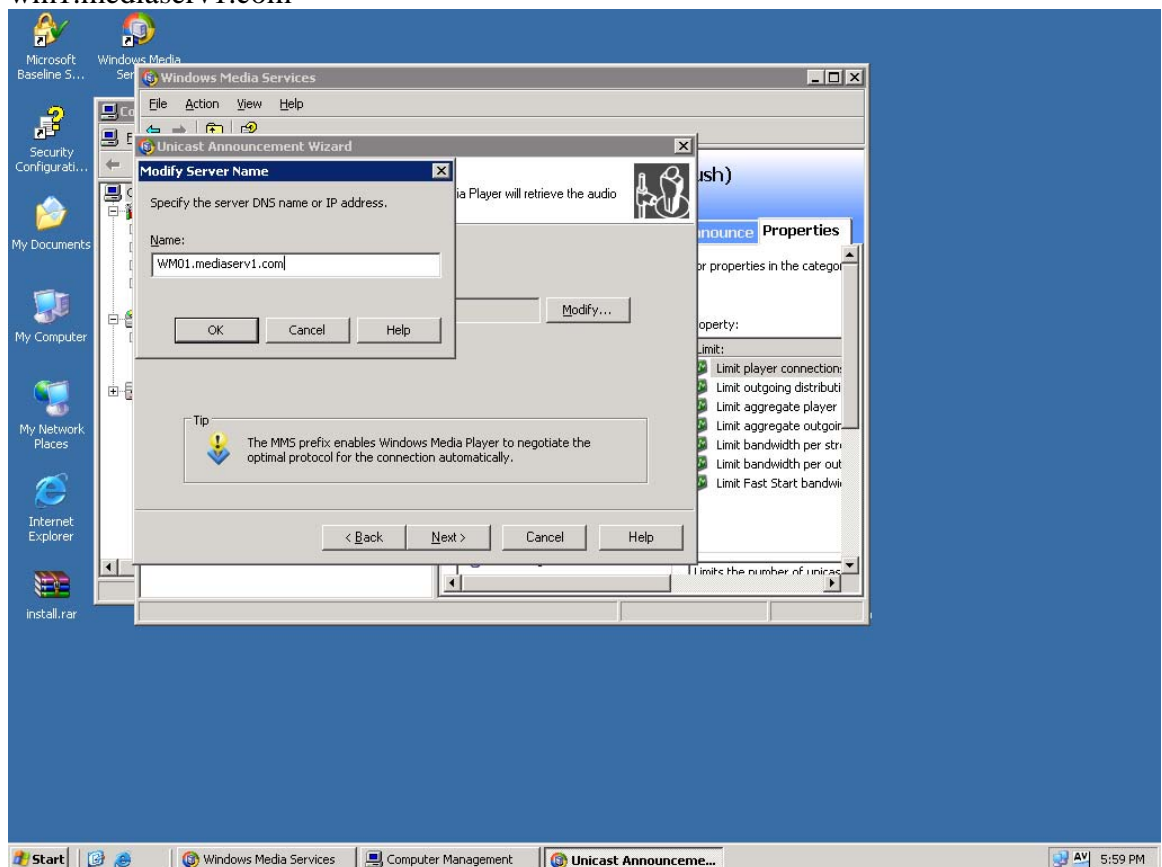
### 13. Click finish



## 14. Click on modify



15. Enter the server IP or your fully qualified domain name (or FQDN), like...  
wm1.mediaserv1.com

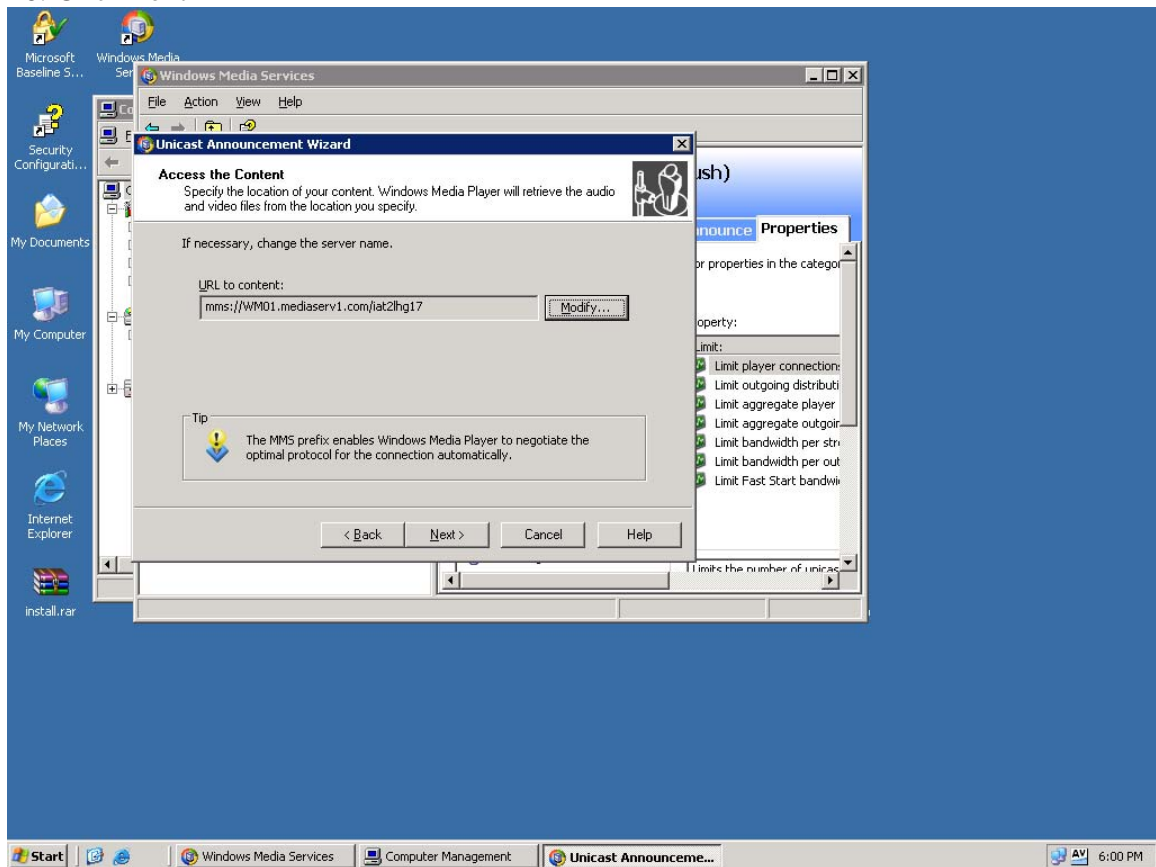


# How Do I: Create a Windows Mount Point on a VPS server

Knowledge Article

Jon Eaton

16. Click next

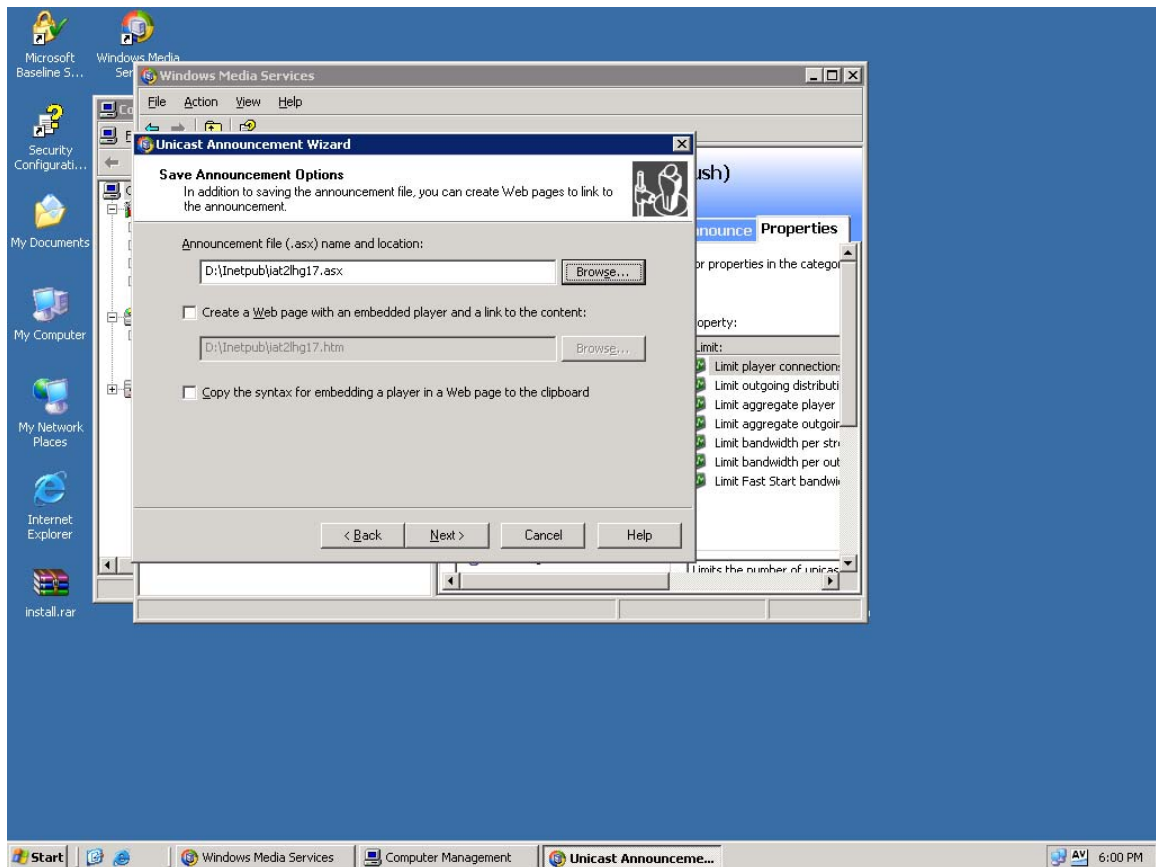


17. Click next

# How Do I: Create a Windows Mount Point on a VPS server

Knowledge Article

Jon Eaton

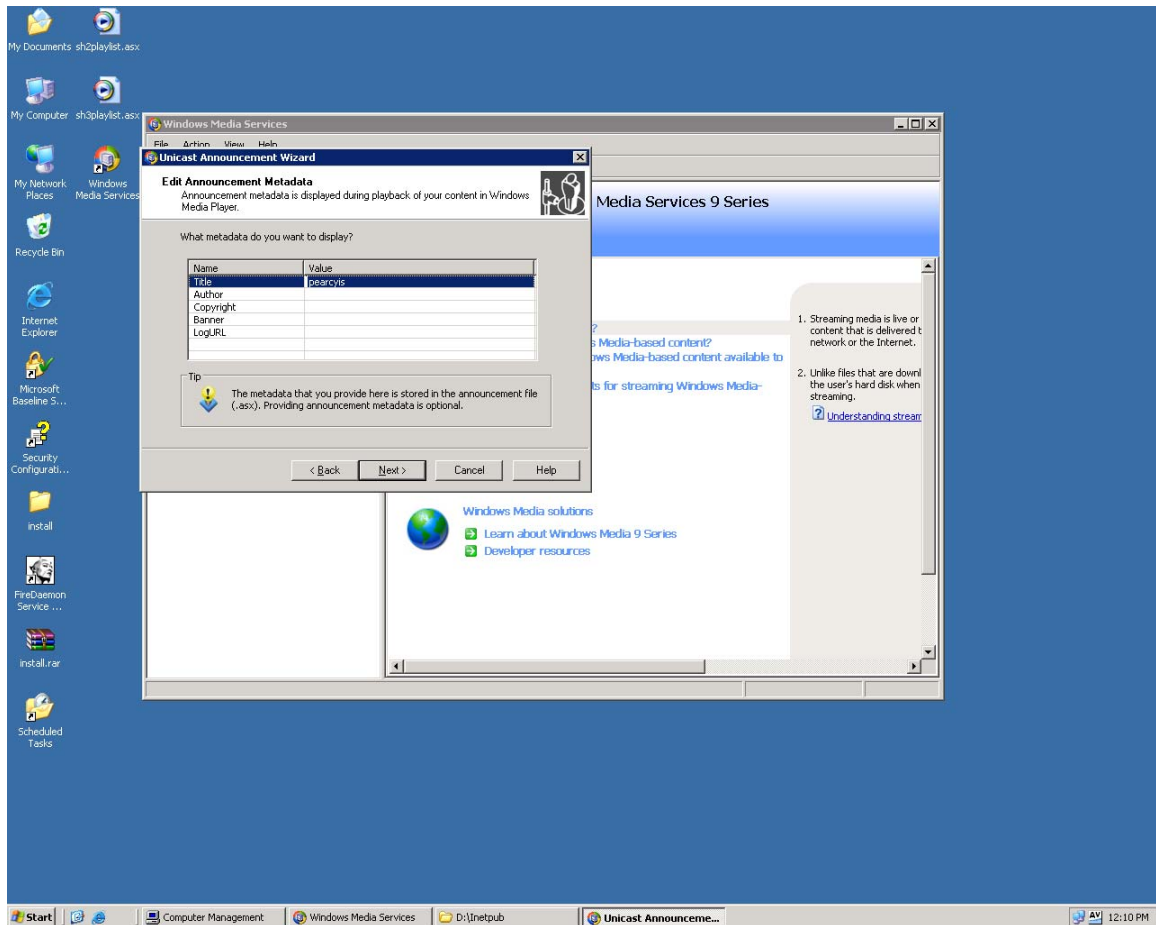


# How Do I: Create a Windows Mount Point on a VPS server

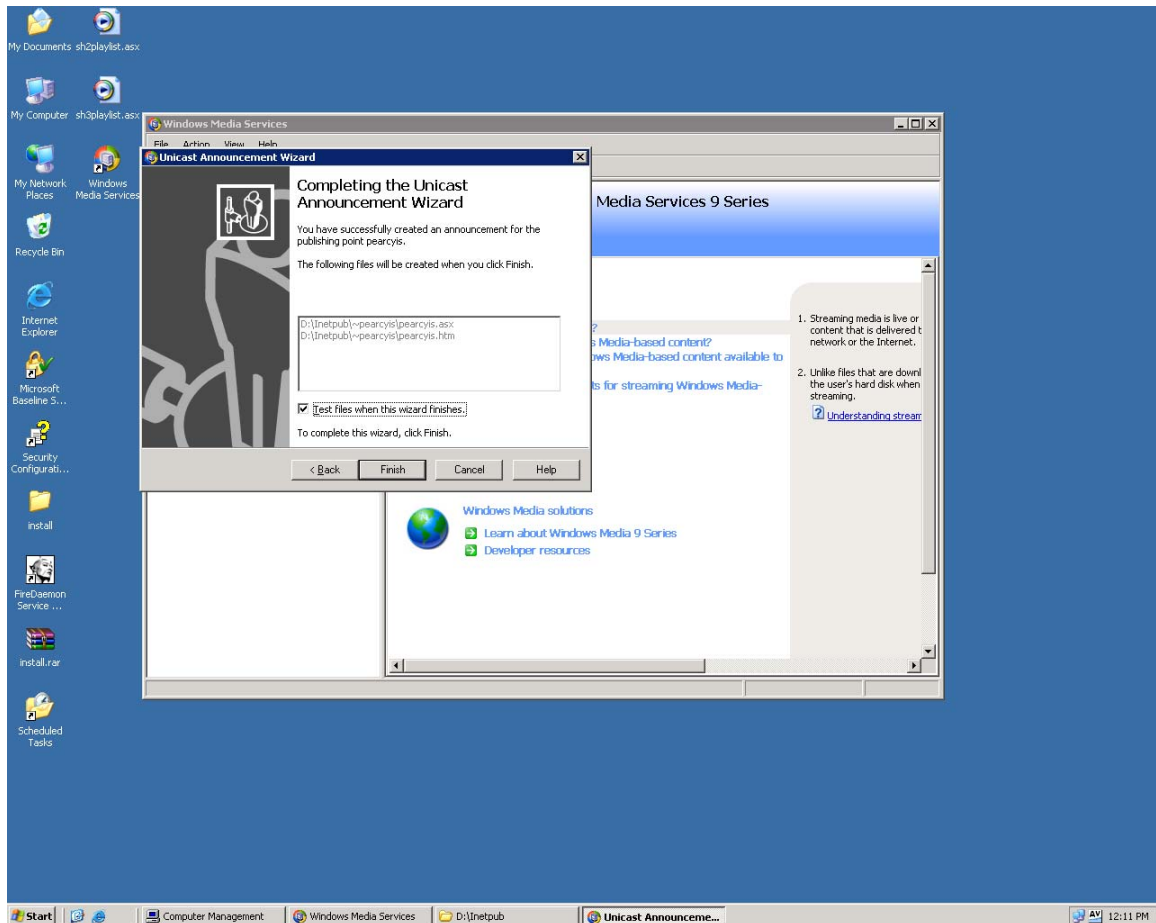
Knowledge Article

Jon Eaton

18. Click next



### 19. Click next



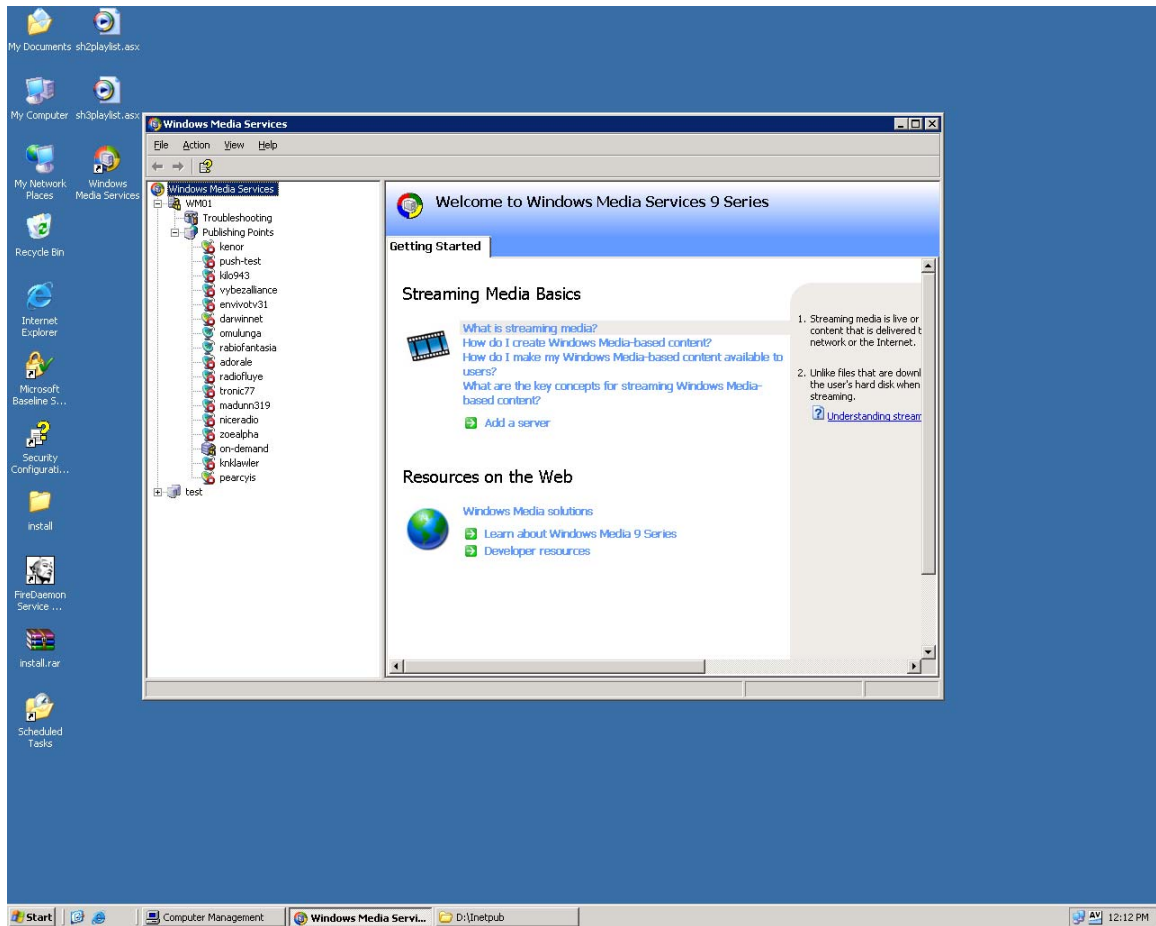


# How Do I: Create a Windows Mount Point on a VPS server

Knowledge Article

Jon Eaton

20. In the “Windows Media Services” window click on the mount point that was just created.

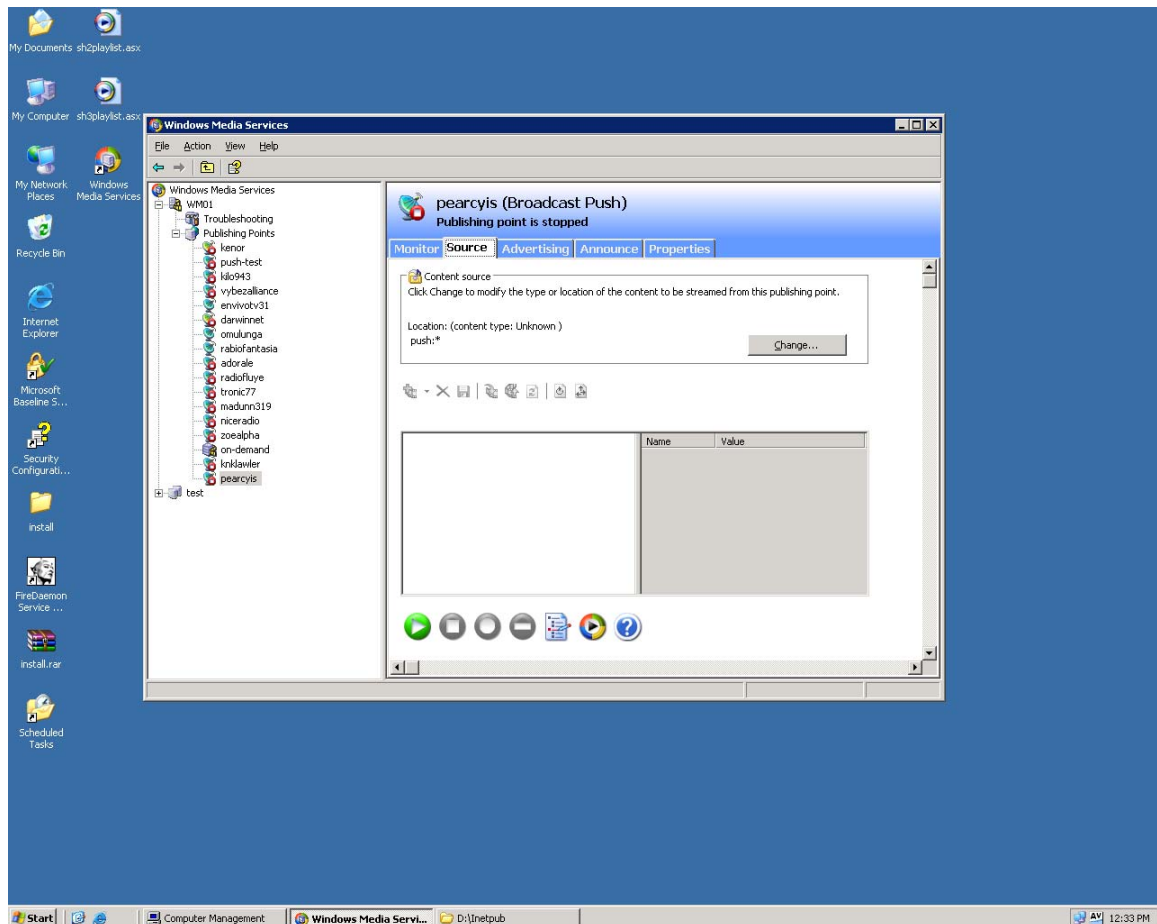


# How Do I: Create a Windows Mount Point on a VPS server

Knowledge Article

Jon Eaton

21. Then Click on the “Source” tab

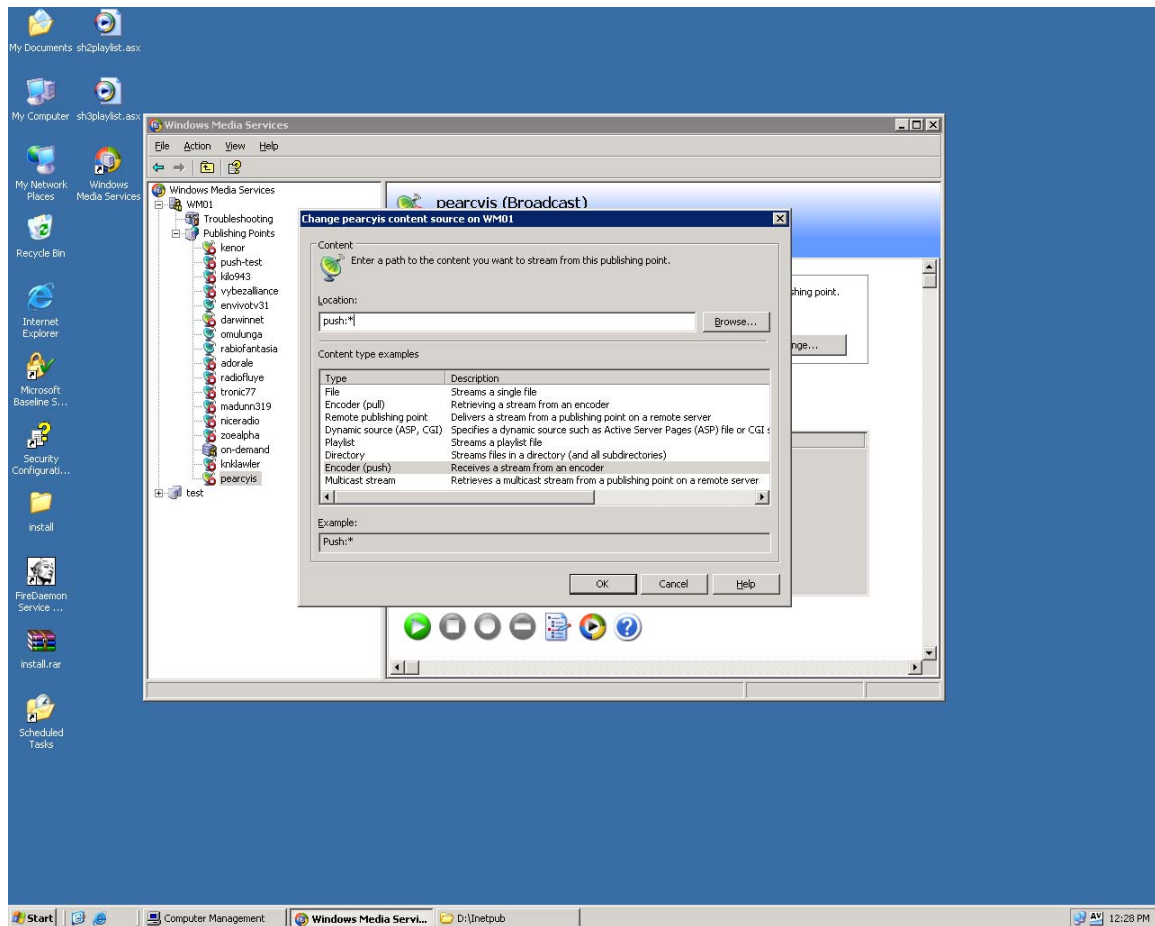


22. If this is to be configured as Push - Click on change, then type in “Push:\*” then click OK

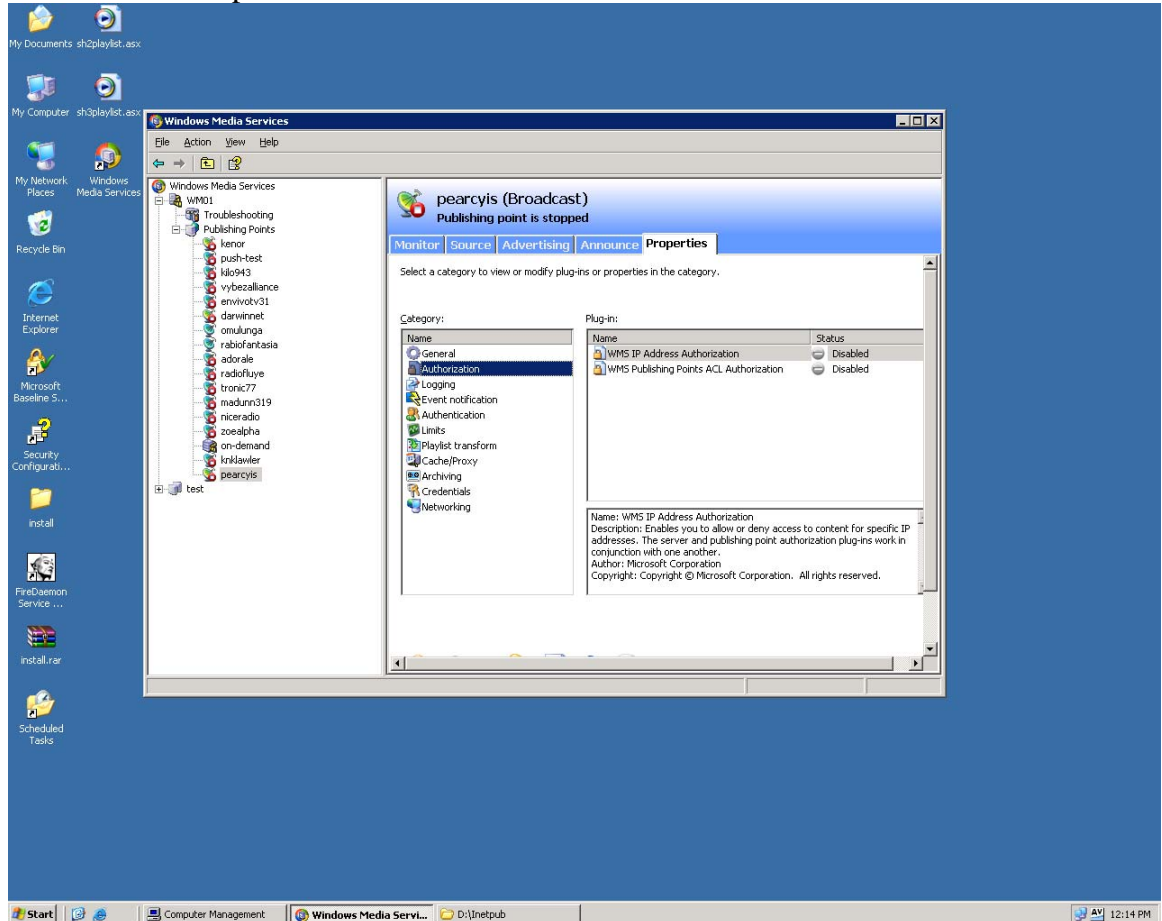
# How Do I: Create a Windows Mount Point on a VPS server

Knowledge Article

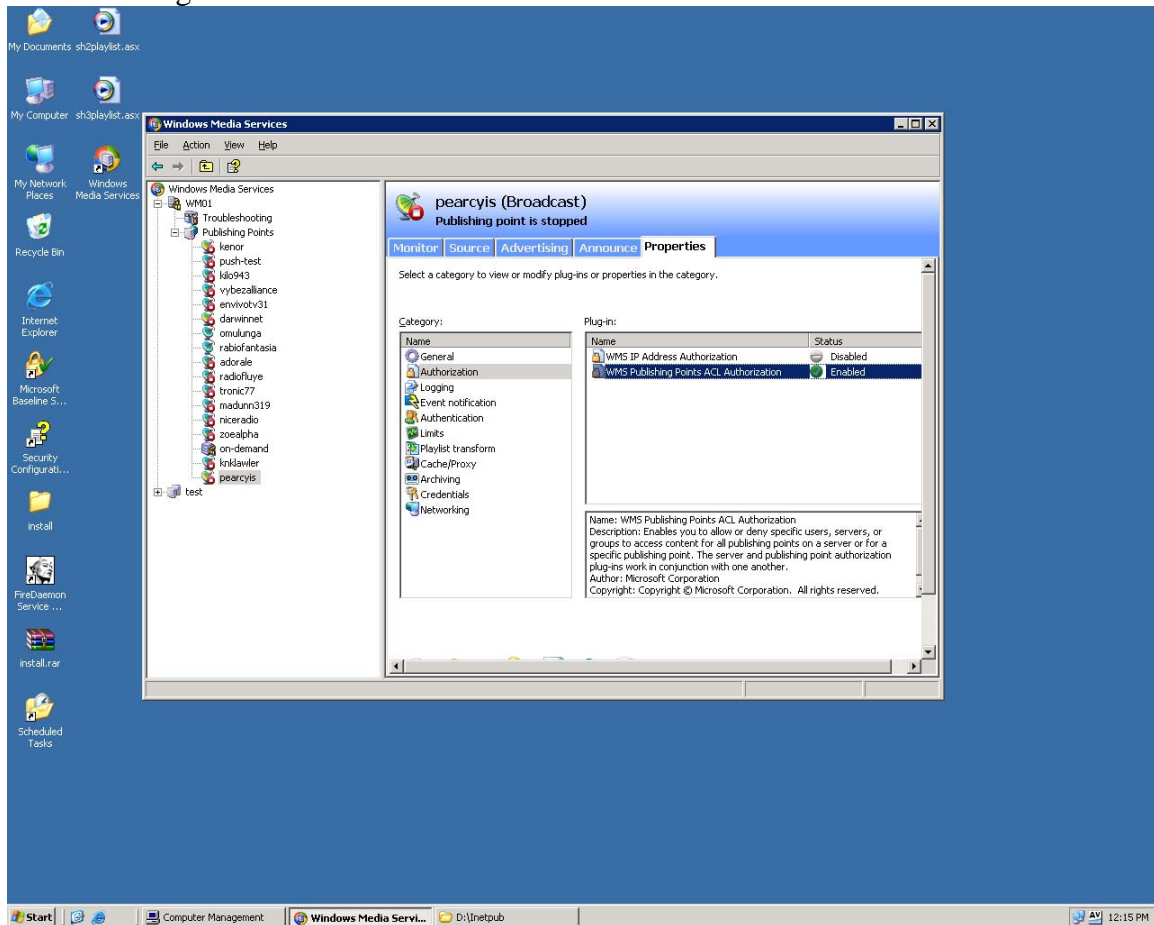
Jon Eaton



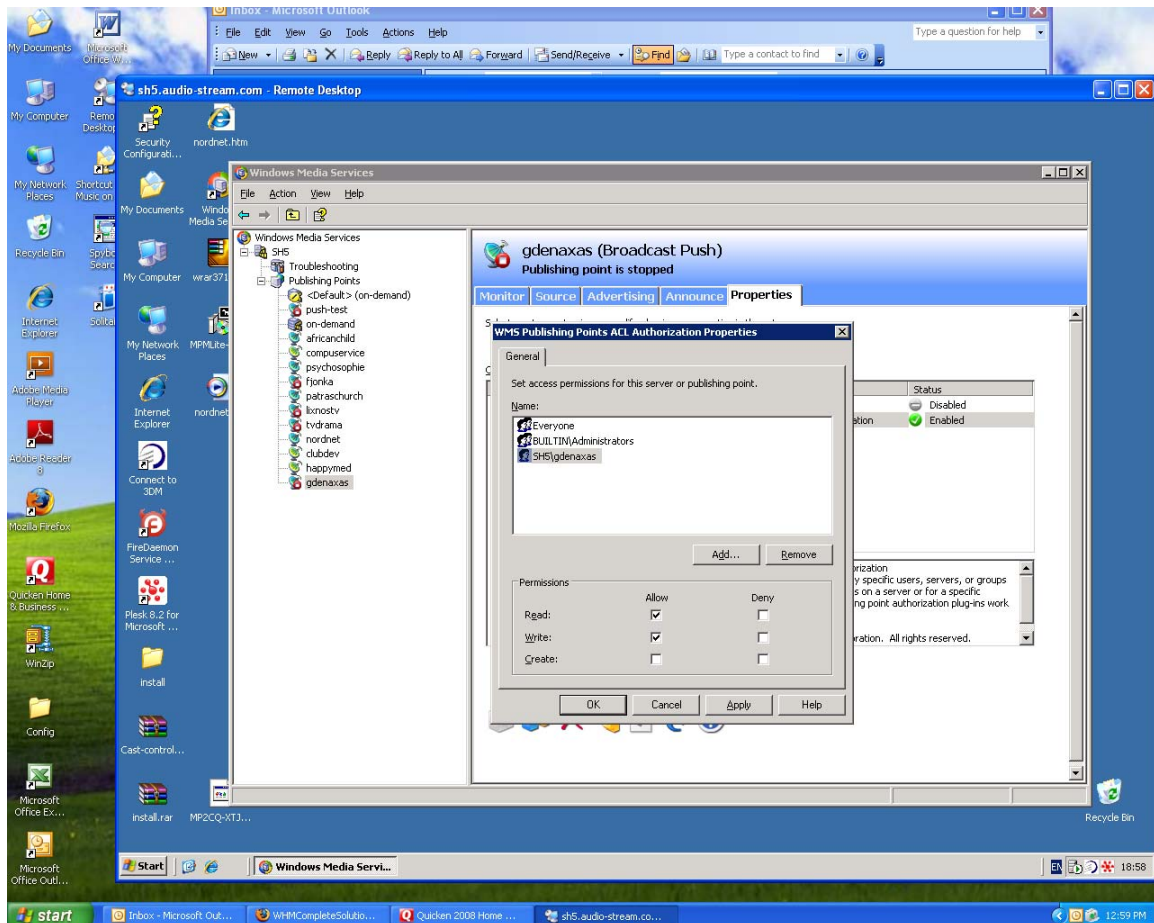
### 23. Click on the “Properties” tab



24. In the “Properties” tab select the “Authorization” and click on the 2<sup>nd</sup> line “WMS Publishing Points ACL Authorization” and click enable



25. Right click on “WMS Publishing Points ACL Authorization” and select properties from the menu. From within the Popup windows click on “Add” to select the customers username. Select the username, check the read and write box and then Click ok

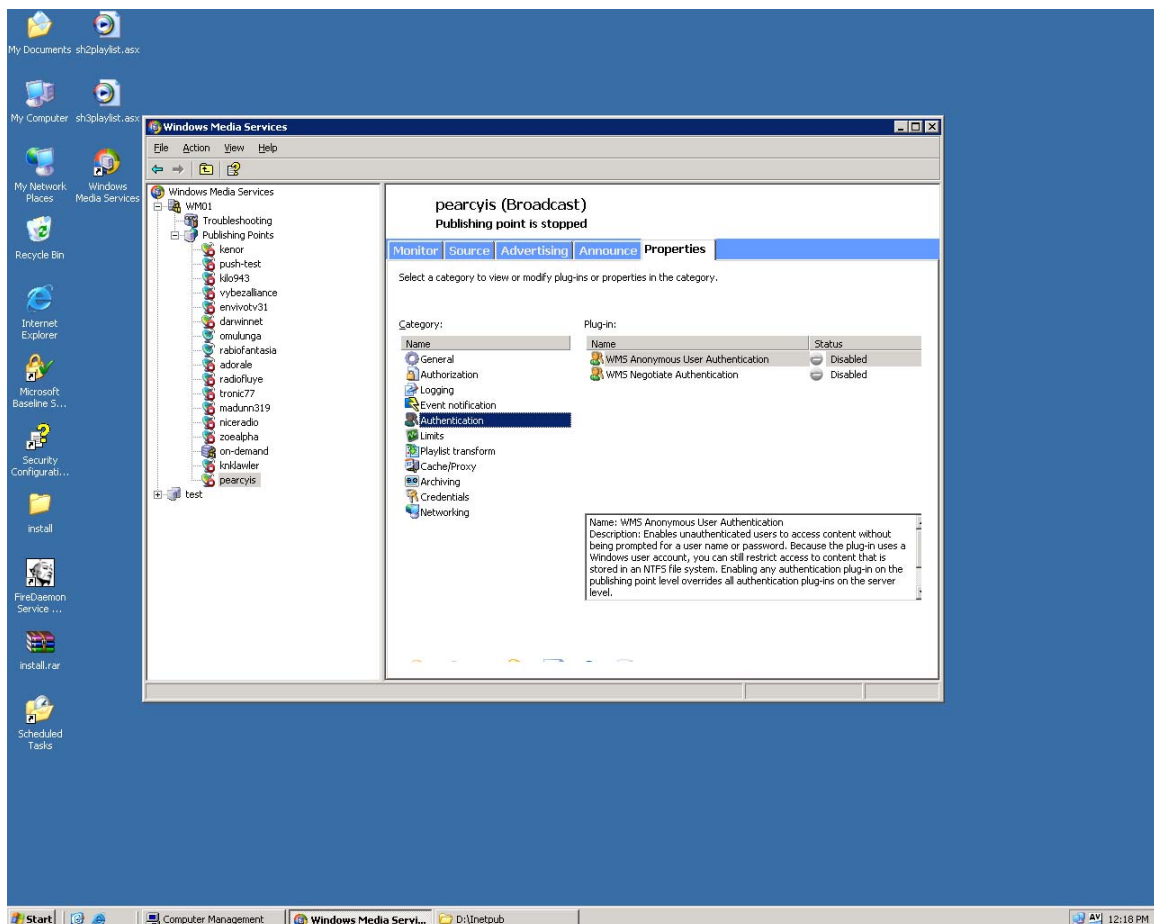


# How Do I: Create a Windows Mount Point on a VPS server

Knowledge Article

Jon Eaton

26. Click on the “Authentication” tab, enable both lines in that window.



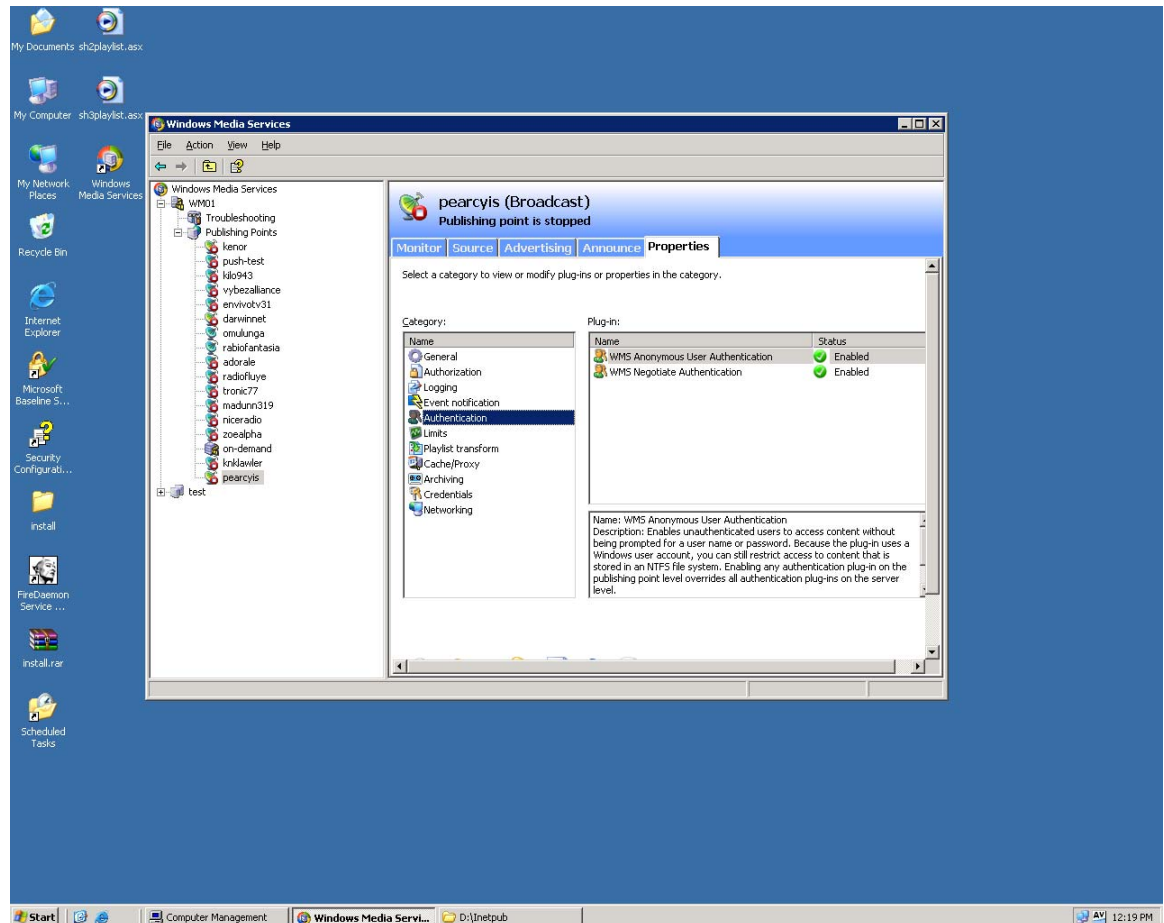


# How Do I: Create a Windows Mount Point on a VPS server

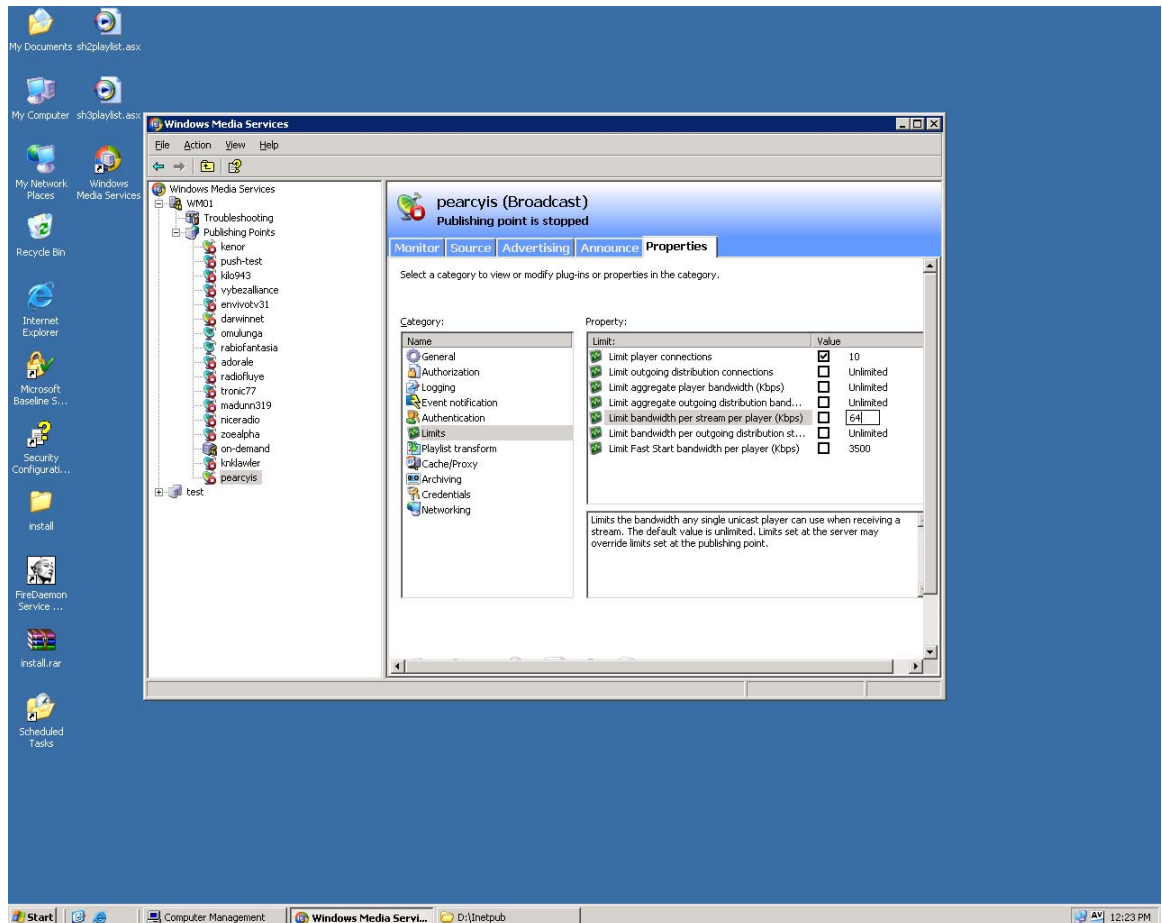
Knowledge Article

Jon Eaton

27. It should look like this.



28. Click on “Limits” put in the number of listeners needed and the kpbs , click on another line to complete



29. You are now done!!!

The server mount point will be <mms://ServerIP/mountpoint/> and the asx file will be at <http://ServerIP/mountpoint.asx>